



Foot option also available.



Cement Mixer

The Digga Cement Mixer can mix anything from cement to fertilizer, it fits quickly and easily to your Digga Planetary Auger Drive.

(Auger Drive sold separately)

Features:

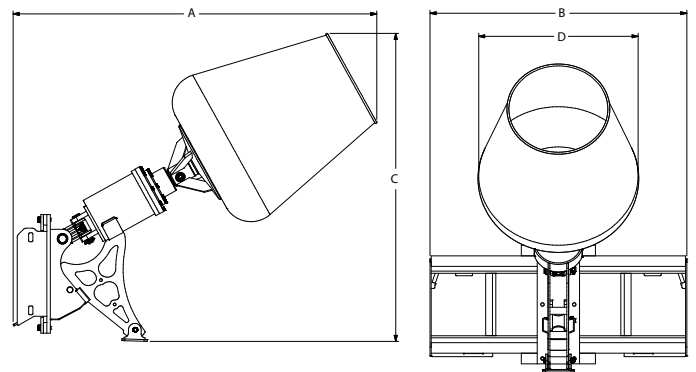
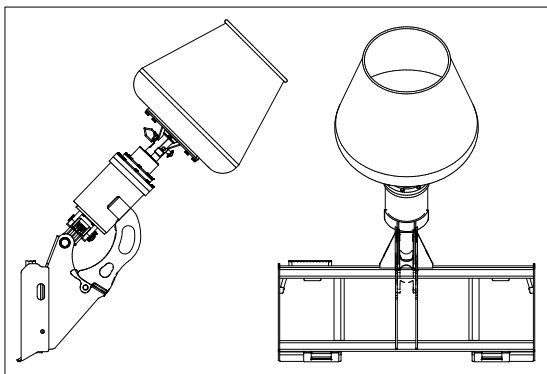
- Easy Connection: Simply pin cradle to existing auger frame and add mixer bowl. Change from drilling to mixing in under 2 minutes.
- Cement mixing attachment to suits Digga auger drives and frames only. Also available for mini machines.
- Maintenance free.
- Manufactured from quality materials.

Ideal Use:

Mixing cement, mulch, animal feed, fertilizer.

Machine Suitability:

Skid Steer Loaders, Front End Loaders and Tele-Handlers.



| Specifications | Small | Large |
|----------------------------------|-------------------|-------------------|
| Total Capacity ^ | 3.9 Cu ft / 110 L | 5.7 Cu ft / 160 L |
| Operating Capacity * | 2.5 Cu ft / 70 L | 4 Cu ft / 115 L |
| Length (A) | 1300 mm | 1424 mm |
| Width (B) | 1212 mm | 1212 mm |
| Height (C) | 1469 mm | 1571 mm |
| Width (D) Bowl Only | 580 mm | 740 mm |
| Weight Complete with PD3 & Frame | 158 kg | 173 kg |
| Weight (Bowl & Cradle Only) | 38 kg | 53 kg |

(*) Maximum operating capacity is measured at an operating angle of 45 degrees.

(^) An upright position depicts total capacity.

Contact your local professional dealer or contact Digga direct

THE BEST DOWNUNDER

DIGGA

PHONE: 1300 2 DIGGA EMAIL: info@digga.com WEB: www.digga.com

QLD, NT
4 Octal Street
Yatala QLD 4207

NSW, ACT
Unit 2, 36 Bluett Drive
Smeaton Grange NSW 2567

VIC, SA, TAS
27 Metcalf Street
Dandenong VIC 3175

WA
6/15 Yampi Way
Willeton WA 6155

AUTHORISED
DIGGA DEALER