



## MINI STUMP GRINDER

### Features:

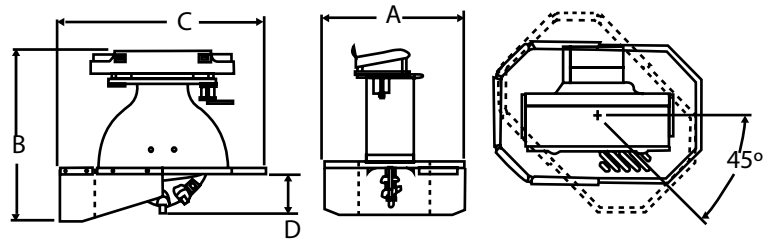
- Disintegrates tree stumps into wood chip quickly with Carbide tipped teeth
- Bearing mounted 18" cutting wheel provides smooth, trouble free operation
- Manually adjustable wheel cutting angle for optimal cutting of any type of stump
- Heavy duty rubber guard protects the operator and bi-standers from flying debris
- The mini stump grinder uses your machine's controls. No need for extra electrics or switch boxes, making it easy to fit to your loader

### Ideal Use:

Removal of tree stumps.

### Machine Suitability:

Mini Machines, Mini Loaders and Mini Skid Steers.



SPECIFICATIONS	
A. Overall Width	626mm (24.67")
B. Overall Height	744mm (29.31")
C. Overall Length	904mm (35.60")
D. Below Ground Depth	169mm (6.69")
E. Angle	45
Number of Cutting teeth- Bolt on	24
Wheel Diameter	18.00"
Hydraulic Flow Requirement (LPM)	38 - 53
Weight (kgs) (with universal mount and square teeth)	147kgs



STUMP GRINDER  
ALSO AVAILABLE

Contact your local professional dealer or contact Digga direct

THE BEST DOWNUNDER

# DIGGA

PHONE: 1300 2 DIGGA EMAIL: [info@digga.com](mailto:info@digga.com) WEB: [www.digga.com](http://www.digga.com)

QLD, NT  
4 Octal Street  
Yatala QLD 4207

NSW, ACT  
Unit 2, 36 Bluett Drive  
Smeaton Grange NSW 2567

VIC, SA, TAS  
27 Metcalf Street  
Dandenong VIC 3175

WA  
6/15 Yampi Way  
Willetton WA 6155

AUTHORISED  
DIGGA DEALER